



Web Parts Data Sheet

Web Part Benefits

Web parts are key to integration, and effectively configured and leveraged, they can provide several benefits:

- Recreating native ECM functionality - for one or many repositories and platforms.
- Building new applications that provide functionality beyond what was possible with native ECM client interfaces.
- Providing more effective navigation and search functionality to increase productivity.
- Preserving native security and permissions to ensure that content remains safe.
- Blurring the lines between SharePoint and native ECM repositories.
- Easing support burdens for IT.
- Eliminating the need for native client interfaces, allowing licensed remote users full ECM access.

Web parts are a fundamental component to the success and usability of SharePoint. Designed to display information and provide interactivity over content, Web parts are highly customizable. SeeUnity offers a suite of web parts designed specifically to enable multiple external enterprise content management (ECM) platforms to be accessed and managed from a common SharePoint interface. SeeUnity web parts can recreate the native ECM features directly in SharePoint; web parts can also allow new functionality to be introduced to go beyond what was previously possible.

What web parts are for

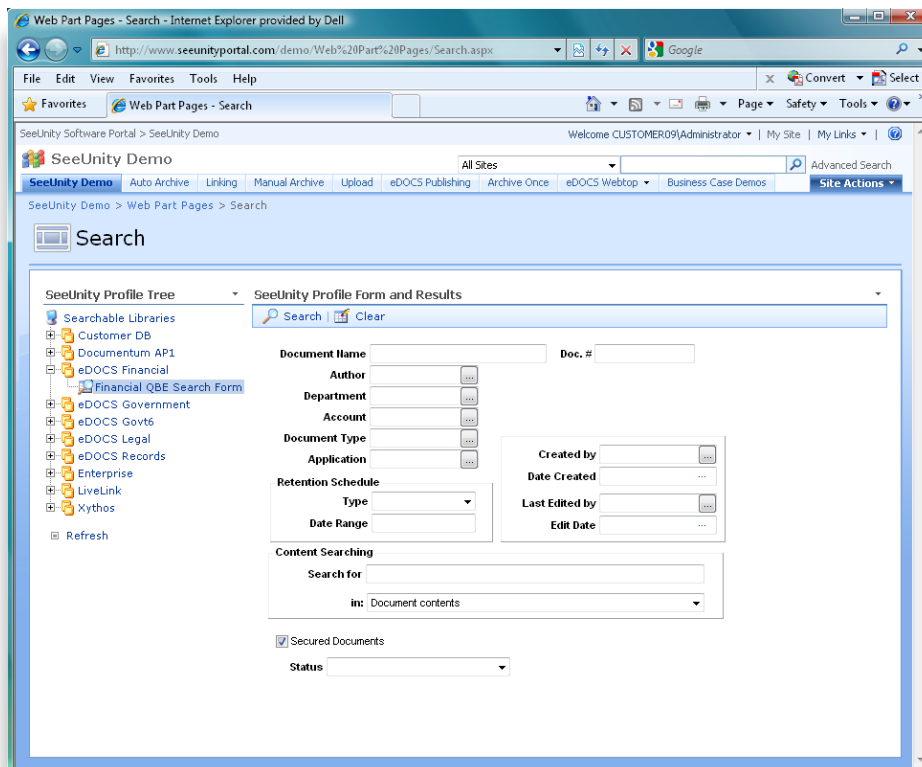
Web parts capture information from native repositories, and present it on a SharePoint page. The type of information displayed is based on: the type of web part used, how the web part is configured, and the available content and metadata. These web parts enable navigation, searching, access and management of all native content from within SharePoint. Web parts can be configured to allow a user to manually execute actions, or to perform rules-based actions automatically.

How web parts work

Highly modular, and targeted in scope, web parts crawl external repositories for specific information. A web part can pull data from multiple repositories, a single repository, or a specific directory from within a repository. The web part returns this information, and displays it to the user. Accessible information includes content, metadata, permissions, ECM controls, and search UIs. Web parts are bi-directional; they provide a view of information, while allowing users to interact with information.

Customizing a web part is a 3 part process:

- Selecting the type of web part to use. Each web part is structured to show a different type of information, format, and type of interactivity (e.g. an explorer tree, or a link list).
- Determining the source locations for web parts to pull content from.
- Setting any conditional rules to filter data. For instance, a web part can crawl metadata, to present a workspace list of documents recently created by a specific person or team.



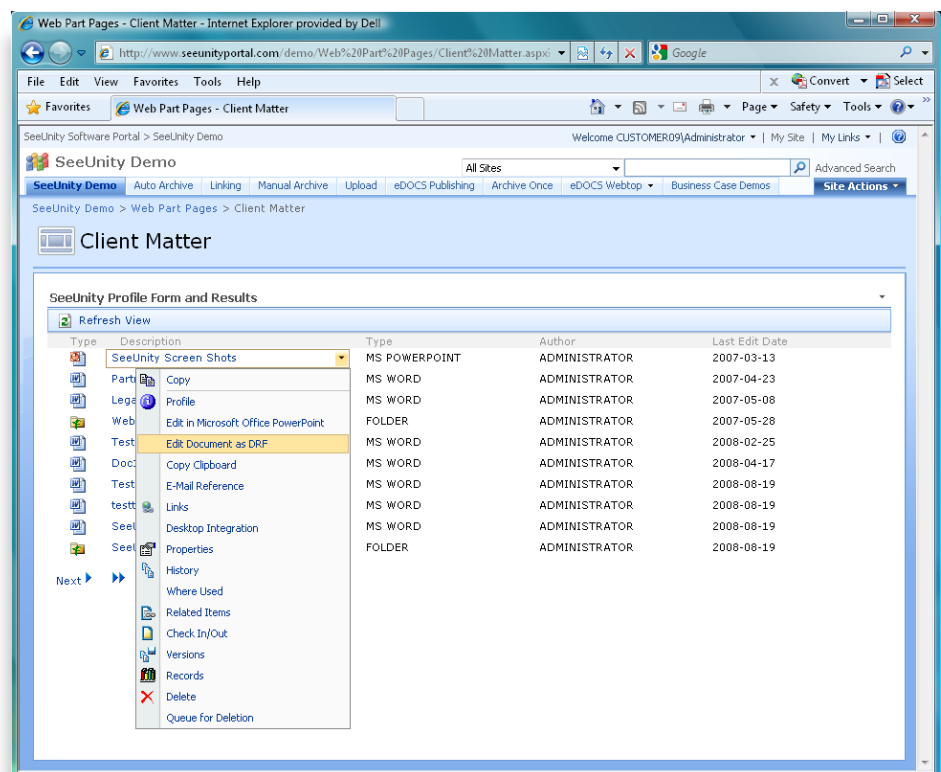
Two SeeUnity web parts: An AJAX-based explorer tree (left) provides a navigational view of all repositories and libraries integrated with SharePoint, and a profile search form (right) recreates the native search UI for any of the selected libraries.

What web parts can do

While there are over a dozen web parts available, they are typically used for several applications:

- **Explorer tree views** provide navigation tree that users can expand to locate content across one or many repositories.
- **Workspace views** provide a detail view of the contents of a specified directory or folder, including specific field values for each result
- **Quick Search Lists** appear as a “smart folder” of documents, and are the result of a pre-configured search query (e.g. - a list of all documents edited in the past week by the Human Resources department).

- **Context menus** allow authenticated users to interact with content, using full content management controls. This allows a user to control versioning, permissions, editing, security, and other native ECM features - directly from within SharePoint.
- **Meta-data mapping** offers the ability to turn any field value associated document into a searchable attribute. For example, a legal brief may return information about the client. Using the meta-data mapping attribute, the client name can be selected, and will execute a search for all documents related to that client.
- **Native searching** web parts recreate the search UI for a particular repository. Each platform has its own unique native search schema and UI; this web part has the ability to intelligently detect and recreate unique search UIs, based on the native repository being searched.



Two SeeUnity web parts: A workspace web part displays documents and key metadata, and a context menu web part exposes all relevant native ECM controls to the user through SharePoint.

Using web parts together

As mentioned, each web part presents content, metadata, or controls according to discreet limitations. To gain the full benefit of web parts, system administrators assemble web part pages that use multiple web parts together. Because of the ease of SharePoint customization, admins can determine the size, location and layout of each web part. A page may include an explorer tree, workspace views,

custom lists, a search UI, and context menus all on one page. While they appear seamlessly integrated for the end-user, behind the scenes, these are multiple web parts working together in tandem.

Take the Next Step

SeeUnity Web parts provide the users to find, access, and manage external content through SharePoint. Properly configured, SeeUnity web parts can both recreate a native ECM experience, and provide new features that go well beyond native functionality. This rich experience can be extended to remote users and mobile devices. The web part suite delivers a mission critical requirement of content integration – bringing the entire native experience into SharePoint.

SeeUnity is a leading developer of Enterprise Content Integration solutions that enable users to search, access, and manage all enterprise content from a common interface. Our products bridge content platforms, and remove the barriers between content silos. SeeUnity brings content together. For more information about how SeeUnity can solve your integration requirements, email us at sales@seeunity.com or call us directly at 970.744.5011.



SeeUnity Inc.

3760 E. 15th St.
Suite 101B
Loveland, CO 80538

www.seeunity.com

Main: 970.744.5011

Fax: 877.336.5028

© Copyright 2010 SeeUnity Inc.

All Rights Reserved Worldwide.

SeeUnity and the SeeUnity logo are trademarks of SeeUnity, Inc. Microsoft is a registered trademark of the Microsoft Corporation. All other trademarks are the property of their respective owners.